

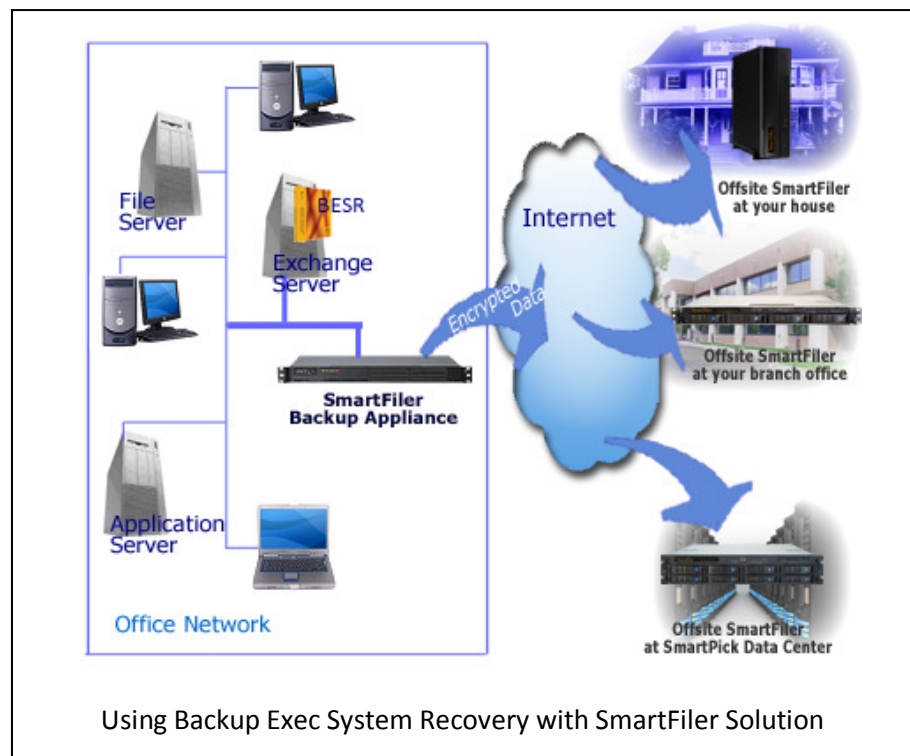
# Using SmartFiler for Microsoft Exchange Server Backup

## Introduction

The SmartFiler Backup Appliance Exchange Server backup solution is integrated with the Symantec Backup Exec System Recovery 2010. Using a pair of SmartFiler Backup Appliances and Symantec Backup Exec System Recovery 2010 (BESR) small and medium businesses can now implement a cost effective solution to backup Exchange servers with 25GB and more.

Backup Exec System Recovery software provides Exchange Server backup, Mail Box level restore and bare metal restore capabilities. Though it creates a local backup on a network or USB disk drive, BESR's offsite backup strategy is to manually take the external disk daily for remote storage. This is not practical for most users and it is not any better than a tape backup that requires daily tape transportation. Often Exchange Mailbox Store size is several gigabytes, and hence the cloud backup method offered by BESR using FTP is not practical either.

However, when Backup Exec System Recovery software is used with the SmartFiler solution as described here users can get daily automated offsite backup without any manual intervention.



## Configuration

Configuring the Backup Exec System Recovery application with SmartFiler solution is simple. The Onsite SmartFiler exports a disk storage space that can be mapped as a network drive on the Exchange Server. This mapped network drive is used as the destination for BESR to create Recovery Point Sets. The Onsite

SmartFiler is configured with a Backup Policy to sync the Recovery Point Sets to the Offsite SmartFiler on a daily schedule. The SmartFiler software is integrated with BESR and can be configured to send users an email notification after BESR performs a backup to the Onsite SmartFiler and after a copy of the Recovery Point is moved to the Offsite SmartFiler.

The first backup of the Exchange Mailbox Store may be large in size (several gigabytes) and hence should be done by connecting the Offsite SmartFiler to the same LAN as the Onsite SmartFiler and the Exchange Server. After the first big backup is done, i.e., the Backup Exec System Recovery application has created the initial Recovery Point on the Onsite SmartFiler and the Onsite SmartFiler has synced the data to the Offsite SmartFiler, you can relocate the Offsite SmartFiler to a remote location.

While configuring the Backup Exec System Recovery the following guidelines must be followed to ensure that the backup to the Offsite SmartFiler happens smoothly even with a low bandwidth Internet connection.

1. Select [\\SFbackup\databases](#) as the destination for creating Recovery Point Sets. This ensures that the recovery point sets are created on the Onsite SmartFiler.
2. Provide a value for the option "Limit the Number of Recovery Points" depending on the size of your Exchange Mailbox Store, size of all other network data backed to the SmartFiler, your Retention Policy and the total storage space available on your SmartFiler.
3. Configure BESR to create a new recovery point set either on a quarterly or yearly basis. You do not want to create a new recovery point set frequently as this would result in backing up the entire Exchange Server. As the creation of a new recovery point set would initiate a big backup, similar to the initial backup, the Offsite SmartFiler should be relocated to the same LAN with the Onsite SmartFiler for a fast backup without relying on your Internet connection speed. You can relocate the Offsite SmartFiler back to the remote location after this new recovery point set creation is completed.
4. Using the "Command Files" option in the BESR, you can configure the Onsite SmartFiler to send you an email notification after Backup Exec System Recovery application finishes a backup.

Step-by-step instructions with screenshots, is included in the Appendix at the end of this document.

## Restoring Data

For restoring Exchange Mailbox Store or individual mailboxes, or for a bare metal restore of the Exchange Server, follow the same instructions provided in the Backup Exec System Recovery user guide.

In the case of a site level disaster, relocate the Offsite SmartFiler to the same LAN where you want to restore the Exchange Server. Using the SmartFiler web user interface, enable Windows Sharing (from Advanced Options→Troubleshooting). Start BESR and point the destination for Recovery Point Set as [\\SFbackup\databases](#).

## Benefits

As indicated in the solution diagram above, the SmartFilers can create an onsite and offsite backup of all your data on the network, from Application Servers, File Servers, and Desktops, in addition to the Exchange Server backup.

The benefits of using the SmartFiler/BESR solution for Exchange Server Backup are:

- **Offsite Backup without Tapes:** You can backup the Exchange Store data and individual mailboxes to the Onsite SmartFiler several times during business hours and nightly to the Offsite SmartFiler. No need to bother with tapes and tape drives. The Offsite Backup is done automatically with SmartFilers.
- **MS Exchange Data Restore:** You can restore the entire Exchange Mailbox Store.
- **Mail Box Restore:** You can restore Individual Mail Boxes. You can restore even a folder from an individual mail box.
- **Bare Metal Restore:** You can restore the entire Exchange server in case of a system failure.
- **Quick Restore from Offsite:** In case of a site level disaster, you can quickly restore your Exchange server and email service, even if your Exchange data is over a terabyte, by moving the Offsite SmartFiler onsite and restoring from that. With cloud based offsite backup, it can take over 2 months to download 1 TB.
- **Backup Network Drives without Additional Licenses:** In addition to backing up the Exchange server, you can backup all your servers and desktops on the network, without any additional licenses or additional cost.
- **Don't Pay Any Monthly Charges:** You don't have to pay Big Bucks to Barracuda or other cloud based backup providers on a monthly basis. The SmartFiler backup solution does not have any monthly costs; you can keep the Offsite SmartFiler at a location of your choice, including your home with just a DSL service.
- **Most Cost Effective Solution:** Using the SmartFiler-BESR to protect an entire office network, including Microsoft Exchange, is the most cost effective solution available in the market today.

## Conclusion

The Exchange Server backup offered by the SmartFiler solution integrated with Backup Exec System Recovery provides an automated and cost effective solution for SMBs to have a comprehensive backup solution that includes mailbox level and bare metal restores.

## Appendix – A: Using Backup Exec System Recovery with SmartFiler

This appendix provides the steps and screens shot to help configure Backup Exec System Recovery software for the purpose of backing up Exchange Server to the SmartFiler Backup Appliance.

### Assumptions

1. End user is responsible for obtaining Backup Exec System Recovery.
2. Exchange Server is installed and configured at end user's offices.
3. End user is familiar with Backup Exec System Recovery and Exchange Server.

### Solution Overview

1. Backup Exec System Recovery is used to select the drive(s) that hold Exchange Server data.
2. Backup Exec is configured to backup Exchange Server data to the [\\sfbackup\databases](#) folder on the Onsite SmartFiler.
3. Setup onsite and offsite backup on the SmartFiler. Make sure that the "Enable Database Backup Offsite" option is enabled.

### Configuration Steps

Open Backup Exec System Recovery and run the Define Backup Wizard. The screen shots given in this document are simply for illustration purposes; use them as a guide and make whatever selections are appropriate for your environment.

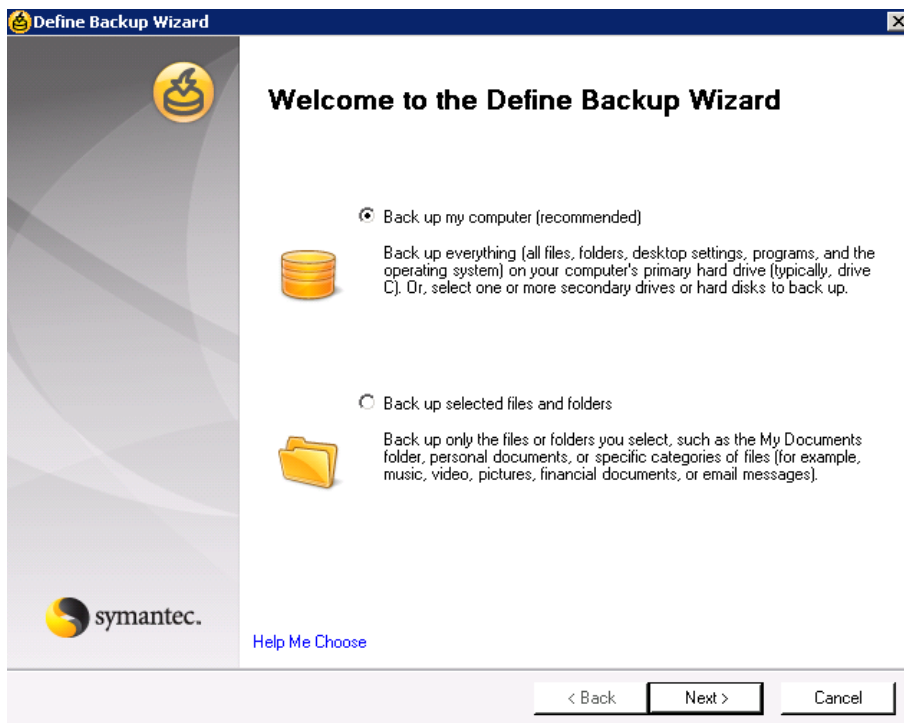


Figure 1

Select the drive where your Exchange Server data is stored.

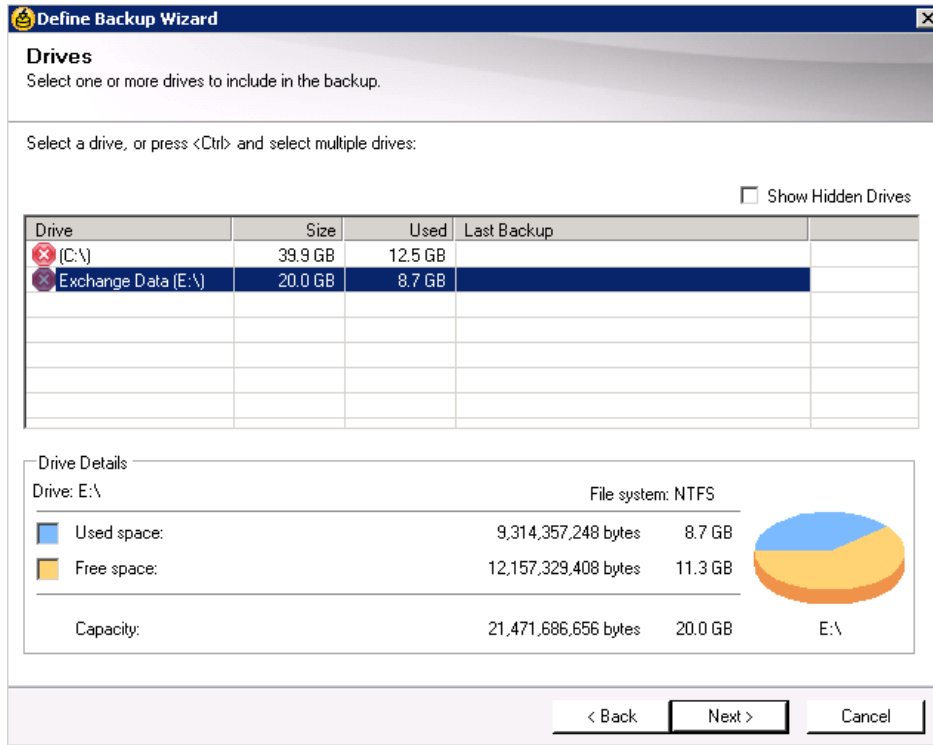


Figure 2

### Create a Recovery Point Set

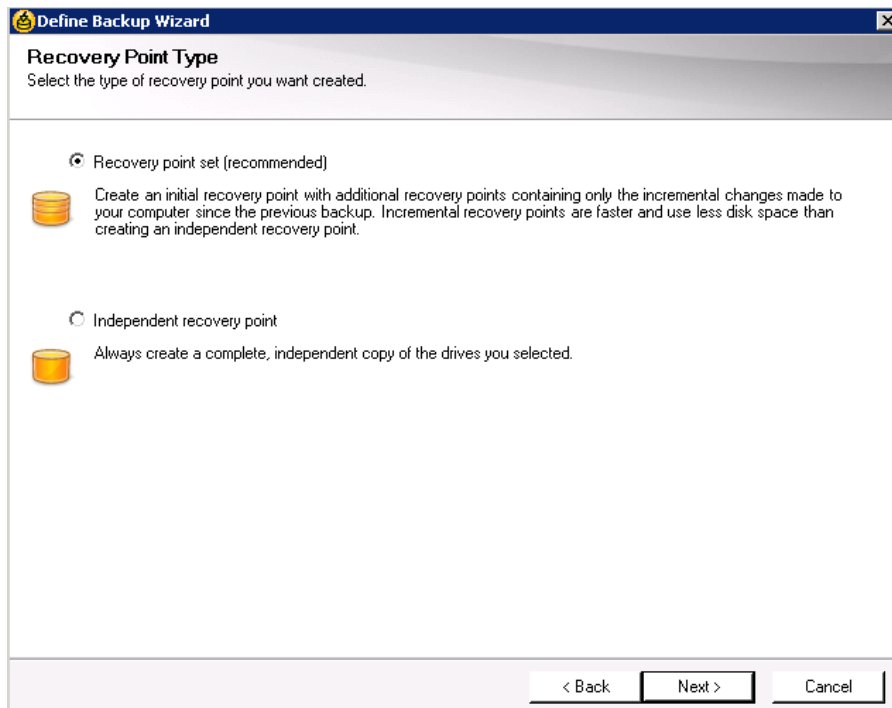


Figure 3

Use the Browse button to navigate to the [\\sfbackup\databases\](#) folder.

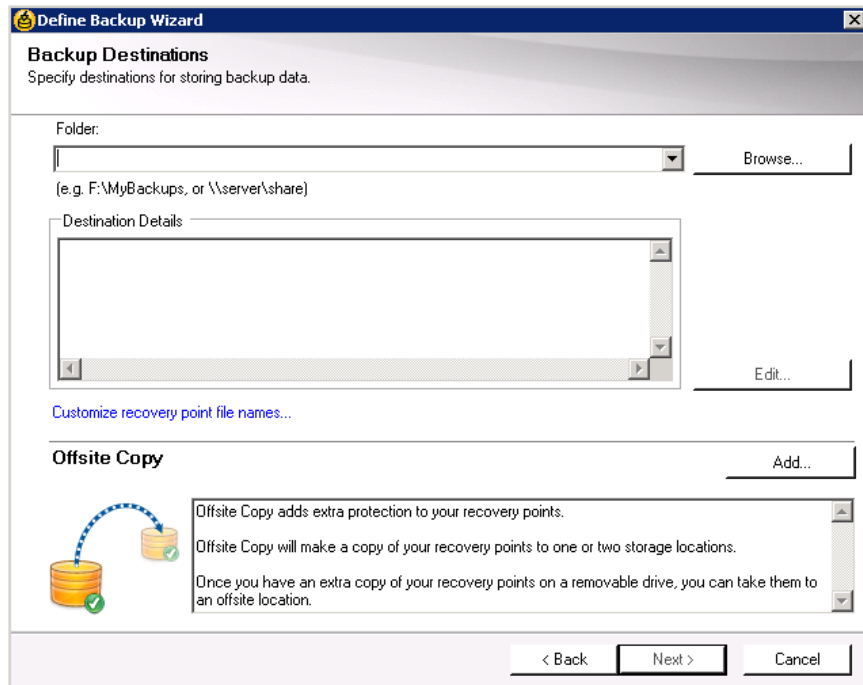


Figure 4

Click Network.

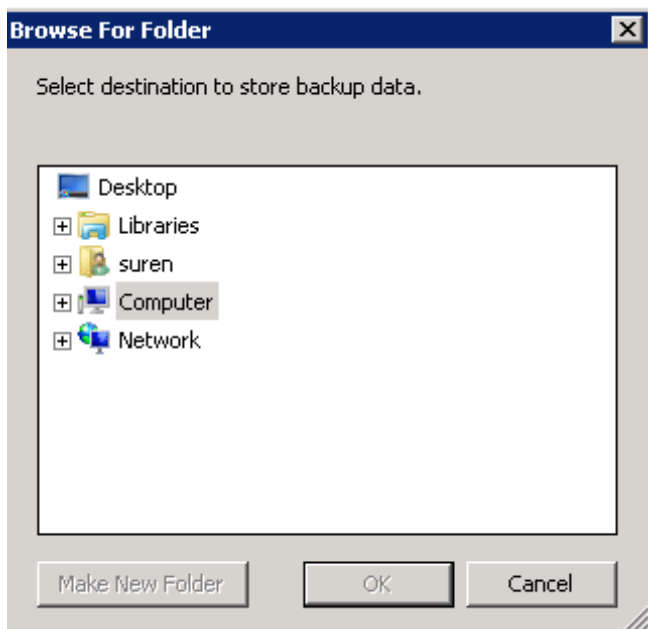


Figure 5

Click SFBACKUP.

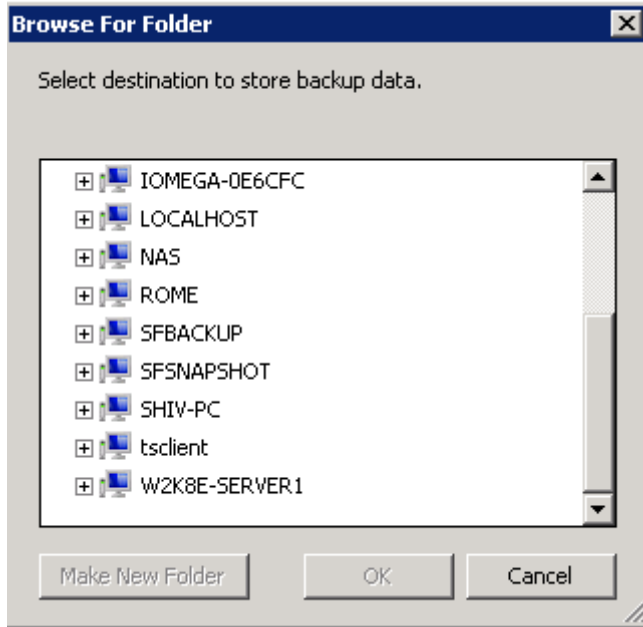


Figure 6

Enter login credential when prompted. Use “backup” for both username and password.

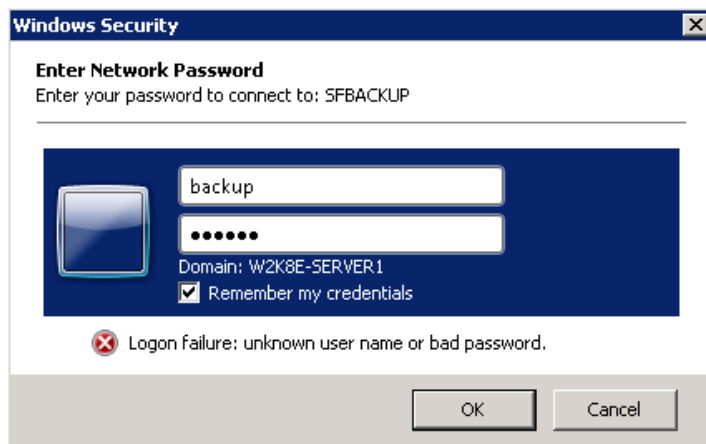


Figure 7

Connect to the shared folder SFBACKUP.

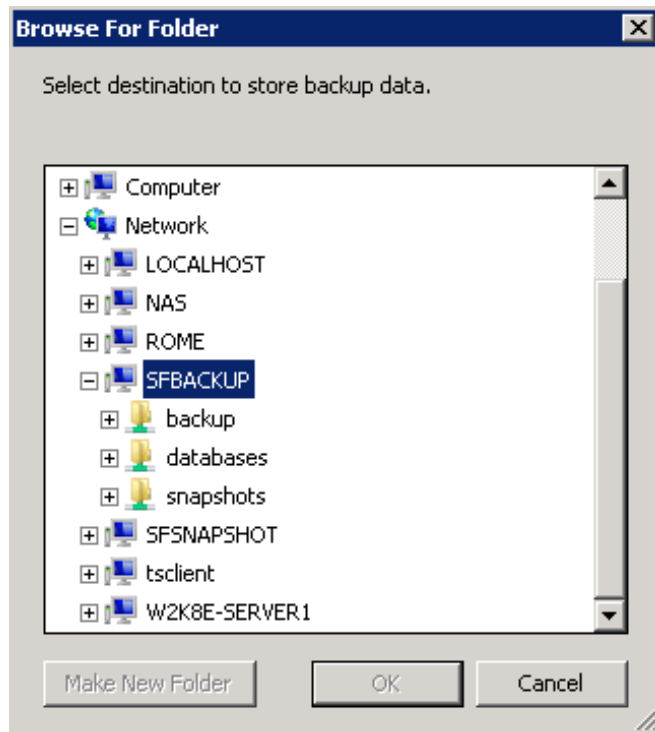


Figure 8

Select the "databases" folder. Click OK.

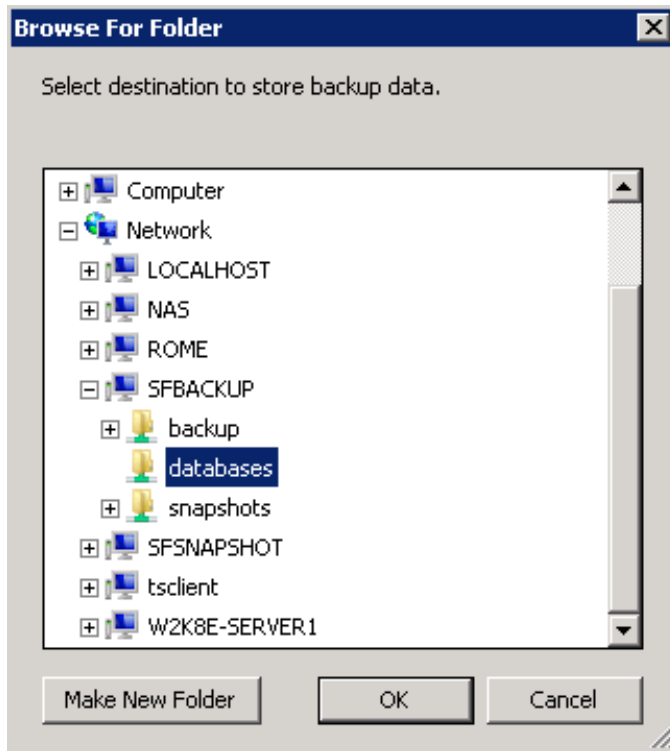


Figure 9

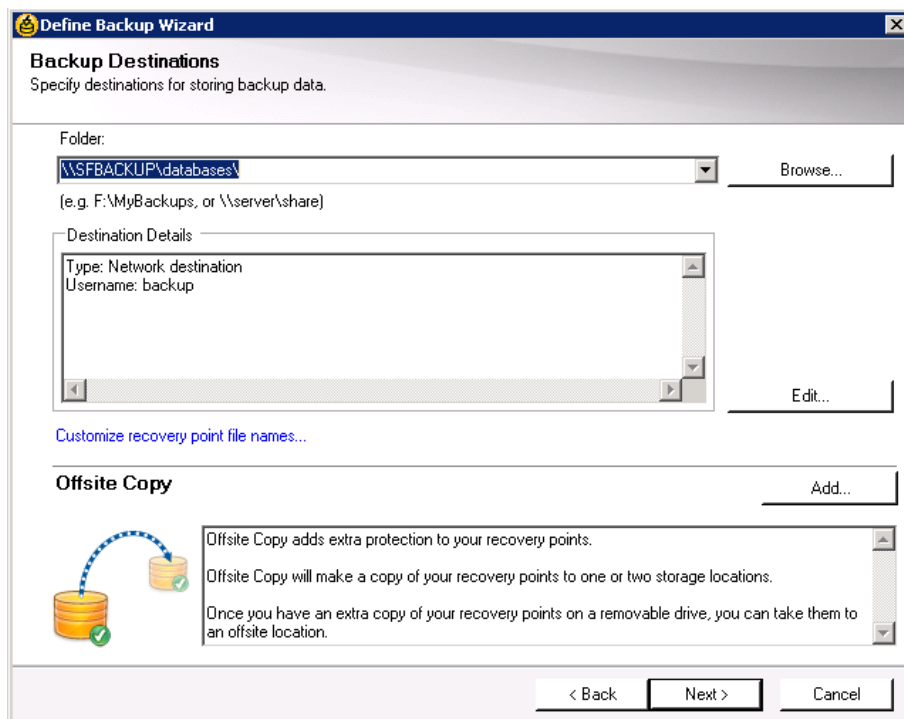


Figure 10

If asked for network login credentials use “backup” for both username and password. Make the selections to suit your needs.

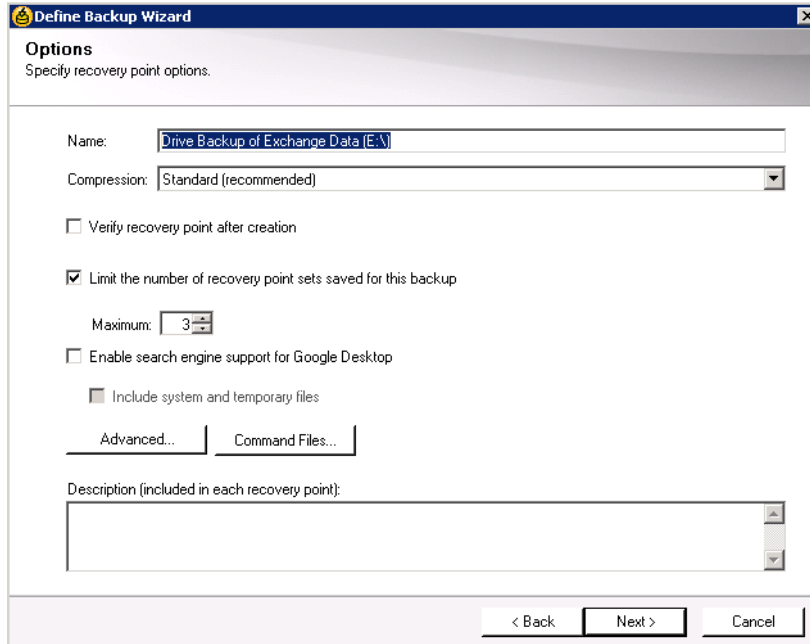


Figure 11

Set a schedule.

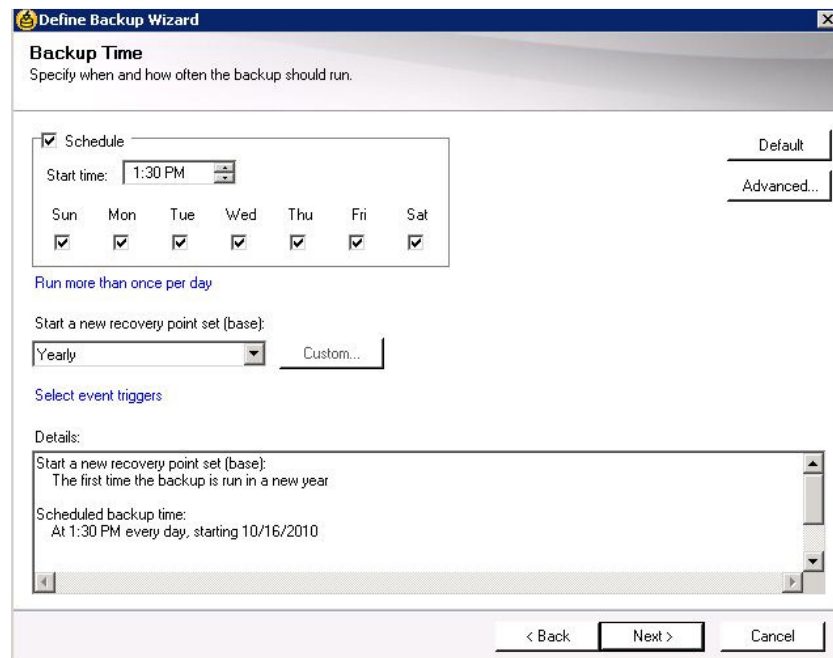


Figure 12

Complete the setup.

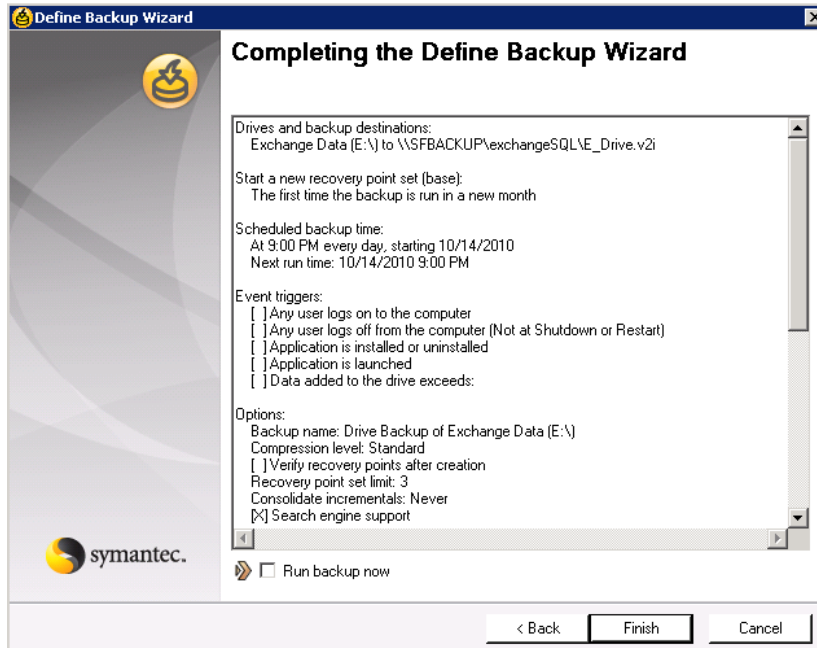


Figure 13

Monitor the backup as necessary using Backup Exec.

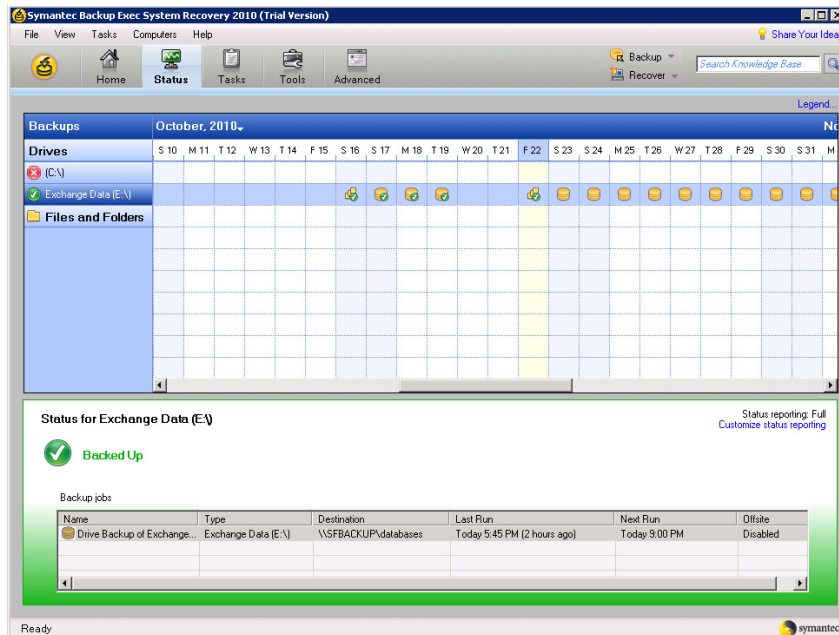


Figure 14

As a final step, configure a suitable backup schedule to backup Exchange Server data to the Offsite SmartFile. Refer to the SmartFile User Guide for instructions.